

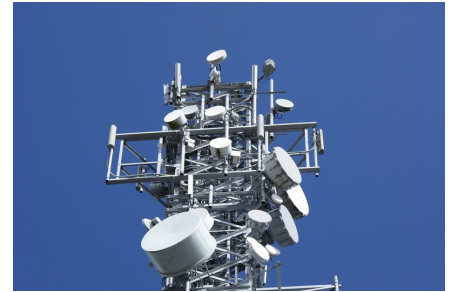
Telecom

Overview:

Telecom represents a unique sector of the industrial marketplace. The fuse requirements of telecom customers differ substantially from those of other industrial groups.

Down-time minimization and reliability are essential for the stability of networks. SOC's high reliability fuses maintain uptime in telecom circuits through quality construction and provide protection ensuring the damage associated with overcurrent risks is minimized.

SOC is capable of meeting the requirements of Telcordia GR-1089 for extreme inrush-currents found when OVP devices activate from lightning strikes. This is accomplished with our lightning surge withstand fuses.



Product Offering:



11CF / CT

Rated currents up to 10A available within 1206 package size. The CF is quick-acting rated from 72-32 VDC. The CT is an inrush-withstand wire-element surface mount fuse rated from 72-35 VDC .



25CF / CT

Servers, AC/DC rectifiers, DC/DC converters. Available with rated currents up to 18A in a 6125 package size



AX1

Designed for telecom fuse panels. This fuse features high quality Ryton® PPS. Fully RoHS compliant models available.